

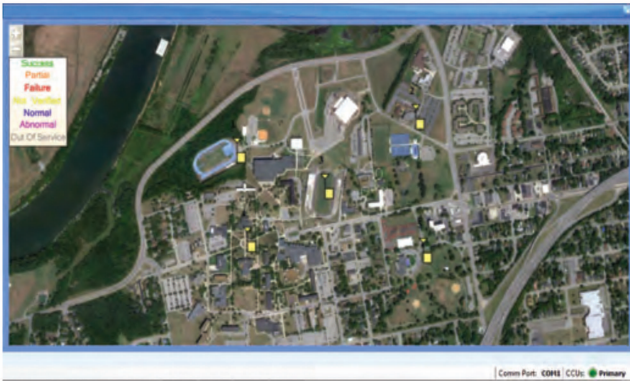
## MassAlert®

MassAlert® is an advanced software program that utilizes a graphical user interface for overall control and monitoring of the ATI emergency notification system. MassAlert® is customized for each client's specific system and utilizes field unit icons layered onto location maps and building diagrams of the system to provide system overview and real-time status. The fast activation shortcut feature allows easy access to preconfigured alerting options so users can activate the system quickly - even when under severe distress. In addition, MassAlert is built on a .NET platform providing the flexibility and scalability for it to be interfaced with a wide variety of associated notification services, systems and solutions.



## Features

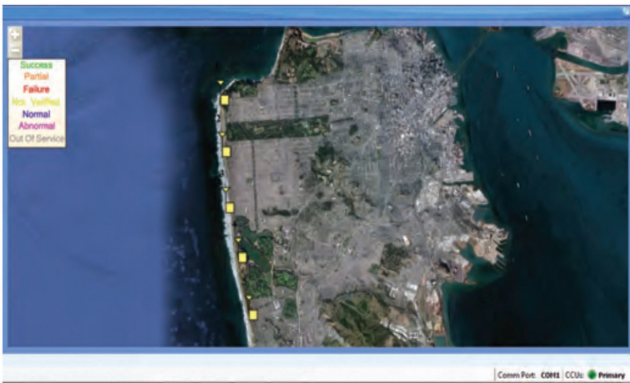
- Single point of activation for entire emergency Mass Notification System
- Easy to use graphical interface utilizing location maps and system sub-views
- Configurable shortcuts for most frequently used activations
- Monitors and displays field unit status for indoor and outdoor equipment
- Control up to 255 field units and 16 control stations, expandable as needed to meet client requirements
- Up to 130 configurable scenarios or pre-configured alerts
- Web-based National Weather Service interface option for severe-weather activation
- Easily configurable, minimal training required
- Web-hosted version of MassAlert® also available
- Client-server remote control option via LAN or Internet
- Optional pop-up messages with text, audio and/or messages to networked computers
- Highly scalable and flexible solution with multiple notification options
- CAP (Common Alerting Protocol) Compliant
- DIACAP approved
- IPAWS compliant



**Campus Software Screenshot**



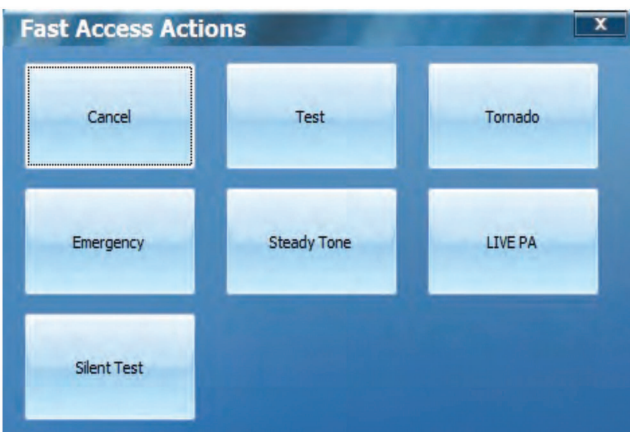
**Industrial Software Screenshot**



**Community Software Screenshot**



**Military Software Screenshot**



**Sample Activation**



**Sample Activation**

All information and specifications are subject to change without notice, and may contain typographical or other errors.